

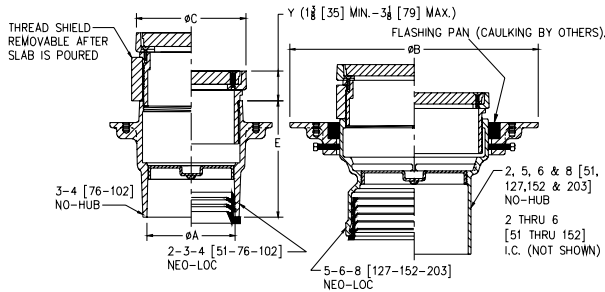
# Z1400-K HEAVY-DUTY "LEVEL-TROL" ADJUSTABLE FLOOR CLEANOUT WITH ANCHOR FLANGE



## ENGINEERING SPECIFICATION

Zurn Z1400-K level-trol adjustable floor cleanout features Dura-Coated cast iron body, anchor flange, gas and watertight ABS tapered thread plug, and round scoriated cast iron heavy-duty secured top (specify finish Z, ZB, ZN, ZS) adjustable to finished floor.

A Pipe Size/ Outlet Type	Dimensions in inches [mm]			Approximate Weight lb [kg]
	B	C	E Body Height Dimensions	
<b>Inside Caulk (IC)</b>				
2IC	9-1/2 [241]	6-1/8 [156]	6-7/8 [175]	18 [8]
3IC	9-1/2 [241]	6-1/8 [156]		19 [9]
4IC	11-1/2 [292]	7-1/4 [184]		20 [9]
6IC	12-1/4 [311]	9-1/4 [235]		39 [18]
<b>No-Hub (NH)</b>				
2NH	7-1/2 [191]	4-1/8 [105]	4-5/8 [117]	11 [5]
3NH	7-1/2 [191]	5-1/8 [130]	5-3/8 [137]	10 [5]
4NH	7-1/2 [191]	5-1/8 [130]	5-3/8 [137]	13 [6]
6NH	11-1/2 [292]	8-1/4 [210]	4-3/4 [121]	29 [13]
8NH	12-1/4 [311]	9-1/4 [235]	7-1/2 [191]	38 [17]
<b>Neo-Loc (NL)</b>				
2NL	7-1/2 [191]	5-1/8 [130]	5-3/8 [137]	12 [5]
3NL	7-1/2 [191]	5-1/8 [130]	5-3/8 [137]	13 [6]
4NL	7-1/2 [191]	5-1/8 [130]	5-3/8 [137]	14 [6]
6NL	11-1/2 [292]	8-1/4 [210]	5-7/8 [149]	29 [13]
8NL	12-1/4 [311]	9-1/4 [235]	6-1/2 [165]	32 [15]



Ⓢ Shown with -SA Stabilizer Option

PREFIXES	DESCRIPTION	A PIPE SIZE	LIST PRICE	
<b>Z1400-K*</b>	Dura-Coated Cast Iron	2"	510.00	
		3"	582.00	
		4"	695.00	
		6"	1,210.00	
		8"	1,434.00	
<b>ZB1400-K</b>	D.C.C.I. with Polished Bronze Light-Duty Top (Deduct 1/2" from 'Y' Dim.)	2"	561.00	
		3"	604.00	
		4"	821.00	
		6"	1,378.00	
		8"	1,594.00	
<b>ZN1400-K</b>	D.C.C.I. with Polished Nickel Bronze Light-Duty Top (Deduct 1/2" from 'Y' Dim.)	2"	626.00	
		3"	660.00	
		4"	883.00	
		6"	1,434.00	
		8"	1,639.00	
<b>ZS1400-K</b>	D.C.C.I. with Polished Stainless Steel Heavy-Duty Top (Add 3/16" to 'Y' Dim.)	2"	POA	
		3"	POA	
		4"	POA	
		6"	POA	
		8"	POA	
<b>OUTLET (SPECIFY PIPE SIZE IN INCHES AND TYPE OF OUTLET)</b>				
<b>TYPE</b>	<b>DESCRIPTION</b>	<b>PIPE SIZE/OUTLET TYPE</b>	<b>E BODY HT. DIM.</b>	<b>ADD</b>
<b>IC</b>	Inside Caulk	2IC, 3IC, 4IC, 6IC	See Chart	<b>N/C</b>
<b>NH</b>	No-Hub	2NH, 3NH, 4NH, 6NH, 8NH	See Chart	<b>N/C</b>
<b>NL</b>	Neo-Loc	2NL, 3NL, 4NL, 6NL, 8NL	See Chart	<b>N/C</b>
<b>SUFFIXES</b>				<b>ADD</b>
<b>-AR</b>	Acid Resisting Epoxy Coated Finish			<b>351.00</b>
<b>-BP</b>	Bronze Plug	2", 3", 4"		<b>194.00</b>
		6", 8"		<b>615.00</b>
<b>-C</b>	Clamp Collar			<b>107.00</b>
<b>-CF</b>	Carpet Flange Cover (ZB and ZN only)			<b>286.00</b>
<b>-CM</b>	Carpet Marker			<b>80.00</b>
<b>-DC</b>	Duresist Cover			<b>303.00</b>
<b>-DX</b>	Round ZB or ZN Top with Dex-O-Tex Flange (2" thru 4" sizes only)			<b>472.00</b>
<b>-G</b>	Galvanized Cast Iron			<b>223.00</b>
<b>-HD</b>	Heavy-Duty Veneer Top - Add 1/8" to 'Y' Dim. (ZB and ZN only)			<b>158.00</b>
Ⓢ <b>-SA</b>	Stabilizer Assembly (See Z1035)			<b>N/C</b>
<b>-SG</b>	Solid Gasketed Cover			<b>303.00</b>
<b>-SM</b>	Special Marking Stamped on Top			<b>194.00</b>
<b>-T</b>	Square Top			<b>N/C</b>
Ⓢ <b>-TC</b>	Neo-Loc Test Cap Gasket (2"-4" NL Bottom Outlet Only)			<b>24.00</b>
<b>-TX</b>	Square Top Recessed for 1/8" Tile (ZB and ZN only)			<b>N/C</b>
<b>-VP</b>	Vandal-Proof Screws			<b>72.00</b>
<b>-X</b>	Round Top Recessed for 1/8" Tile (ZB and ZN only)			<b>N/C</b>
<b>-Z</b>	Round Top Recessed for 1-1/4" Terrazzo (ZB and ZN only)			<b>351.00</b>
<b>BEST SELLERS</b>			<b>LIST PRICE</b>	
ZN1400-K-4NH			<b>883.00</b>	
ZN1400-K-4NL-BP			<b>1,077.00</b>	
ZN1400-K-6NH			<b>1,434.00</b>	